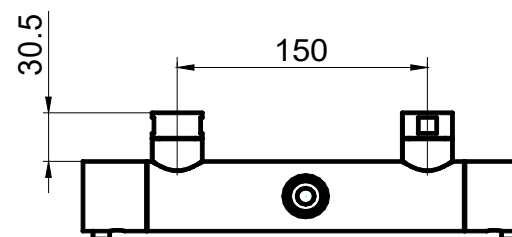
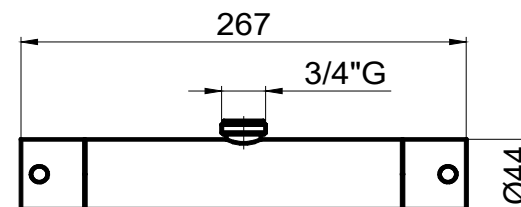
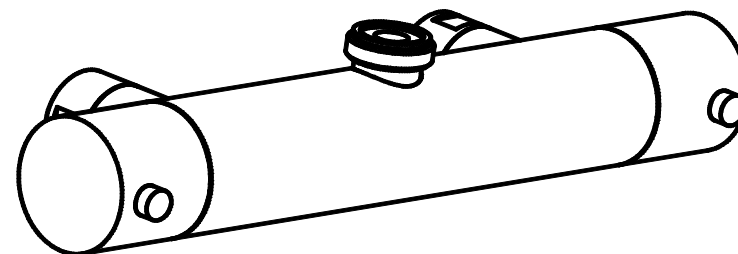


MTD2.44 shower thermostatic mixer, upwards outlet
miscelatore termostatico doccia, uscita in alto

upwards outlet body (corpo uscita in alto)	106340
nipple with valve seat (sede con valvola) (x2)	106344
OR for nipple (OR x sede con valvola) (x2)	050613
bushing (boccola) (x2)	106287
connection 3/4"G x2 (calotta)	106282
check valve (valvola di non ritorno) (x2)	*
seeger (x2)	*
screw plug (tappo) (x2)	106334
OR for screw plug (OR x tappo) (x2)	050703
seat headwork (sede vitone)	106342
OR for seat headwork (OR x sede vitone)	050639
haedwork 1/2"G (vitone)	*
thermostatic cartridge (cartuccia termostatica)	*
nut for cartridge (ghiera serraggio cartuccia)	154210
niplex 3/4"G	106289
OR for niplex	563298
handle (corpo maniglia) (x2)	106328
bushing for handle (boccola per maniglia) (x2)	447362
stainless steel screw M4 (grano M4) (x2)	050615
push-button (pulsante) (x2)	106324
trunnion (perno per fermo) (x2)	106325
spring (molla) (x2)	050612
screw M4 (vite M4) (x2)	106319
plastic temperature stop (fermo temperatura in plastica)	*
plastic flow stop (fermo portata in plastica)	*



* : articles not belonging to our production (articoli non di nostra fornitura)